

# SNOWY MOUNTAIN Campers

## CLOUD MODEL



## OWNER'S MANUAL

Thank you, and congratulations on purchasing your new Snowy Mountain Campers recreational vehicle. Our two main goals are to provide you with the perfect vehicle for your enjoyment and to make a product that will last as long as possible.

Of course, you're safety is our greatest concern. Please read and understand the content of this manual, and heed all warnings and precautions listed to assure your travels are filled with fond memories. Understand your new RV's capacities and capabilities.

You should also familiar yourself with the capacities and capabilities of your tow vehicle. That may mean consulting your tow vehicle owner's manual, specifically for their towing procedures.

Take a little time to get the feel of towing your new vehicle before you head off on that long trip. The difference between a leisurely trip and days of white knuckle driving could be as simple as a different drop in your ball mount. The time to find that out is prior to your vacation departure. Most importantly, if you have any questions regarding the use or care of this Snowy Mountain Campers product, please contact us directly and we will do our best to advise you.

This recreational vehicle may contain equipment acquired from a third party manufacturer. If there was an owner's manual or warranty included with that product, this information can be found in the packet which contained this manual. You're Snowy Mountain Campers warranty does not cover components manufactured by a third party, so please familiarize yourself with those products by reading and following the instructions provided by that manufacturer. Also, fill out any registration cards provided for each component, and return them to their respective manufacturer.

This vehicle should last much longer than the standard construction RV, if it is properly maintained. This manual will cover routine maintenance and offer tips on sealing, cleaning, and getting the most out of your new Snowy Mountain recreational vehicle.

**WARNING:** Read all instructions in this manual, and all other documents supplied in your owner's packet along with instructions supplied by component manufacturers, before using your RV.

Your vehicle has been manufactured in accordance with all Federal Motor Vehicle Safety Standards and all State Regulations at the time of its manufacture.

# One Year Limited Warranty

We pride ourselves in building the best products we possibly can. Each product is hand crafted by individuals who really care about their work and your enjoyment after the purchase. All of our products undergo numerous inspections and safety checks and still, we are not perfect. So we offer you a one year limited warranty on defective materials and labor. We will repair or replace, at our discretion, any defect in materials and workmanship for the period of one full year from the date of purchase. Sorry, this does not include abuse, normal wear and tear, or neglect.

We would also like to know how our products perform, so if anything, ever, goes bad, we would appreciate your comments and we may, at our discretion, be able to help with that also.

Please enjoy the product we built for you, and thank you for your patronage.



1102 Crowley Ave., Lewistown, MT 59457

Glen Pegg 406-366-9007 \* Darren Morgan 406-366-5672

Esther Pegg 406-350-1428 \* peggpen@yahoo.com

Please fill out the form below and mail it to us within 30 days of your purchase.

-----  
**Customer Name:** \_\_\_\_\_

**Street Address:** \_\_\_\_\_

**City:** \_\_\_\_\_ **State** \_\_\_\_\_ **Zip Code:** \_\_\_\_\_

**Model:** \_\_\_\_\_ **VIN:** \_\_\_\_\_

**Dealer Name:** \_\_\_\_\_ **Dealer Address** \_\_\_\_\_

## INDEX

| Section    | Page |                                     |
|------------|------|-------------------------------------|
| SECTION 1. | 5    | DIMENSIONS, WEIGHTS, AND CAPACITIES |
| SECTION 2. | 7    | COUPLING YOUR TOW VEHICLE AND RV    |
| SECTION 3. | 9    | WIRING YOUR TOW VEHICLE TO YOUR RV  |
| SECTION 4. | 10   | TOWING YOUR RV                      |
| SECTION 5. | 12   | LOADING YOUR RV                     |
| SECTION 6. | 13   | YOUR RV'S FEATURES AND OPTIONS      |
| SECTION 7. | 17   | MAINTAINING AND STORING YOUR RV     |
| SECTION 8. | 19   | TROUBLESHOOTING                     |

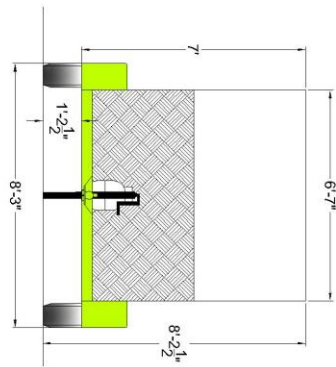
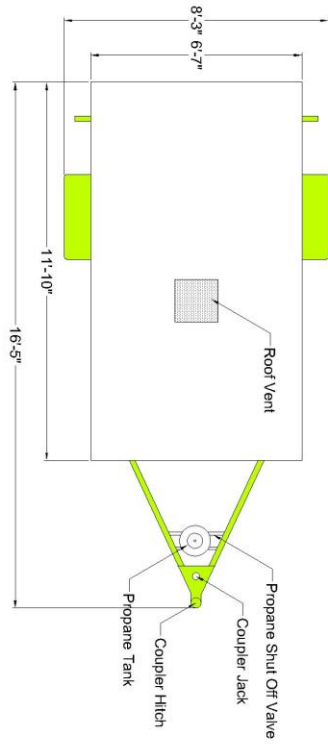
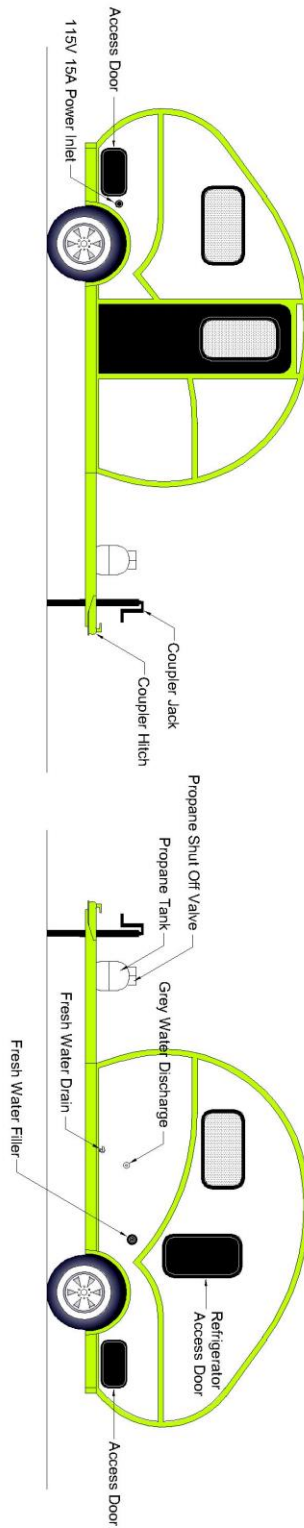


1102 Crowley Ave., Lewistown, MT 59457

Glen Pegg 406-366-9007 \* Darren Morgan 406-366-5672

Esther Pegg 406-350-1428 \* [peggpen@yahoo.com](mailto:peggpen@yahoo.com)

# SECTION 1. DIMENSIONS, WEIGHTS, AND CAPACITIES



Cloud floor plan.

The VIN Label for your trailer is located on the front left hand side of the trailer body. It lists the vehicle weights, tire, and axle ratings. The GVWR gives you the Gross Vehicle Weight Rating. If you subtract the vehicles weight empty, as listed later in this section, from the GVWR, this will determine the amount of cargo you are permitted to carry.

**MANUFACTURED BY:** SNOWY MOUNTAIN CAMPERS      **DATE:** XX/XXXX

**GVWR** 1587      **KG(** 3500      **LB)**

**GAWR ALL** 1587      **KG(** 3500      **LB) PER AXLE WITH** ST205/75/15 TIRE      15X6      **RIM**

**AT** 350      **KPA(** 50      **PSI) COLD SINGLE**

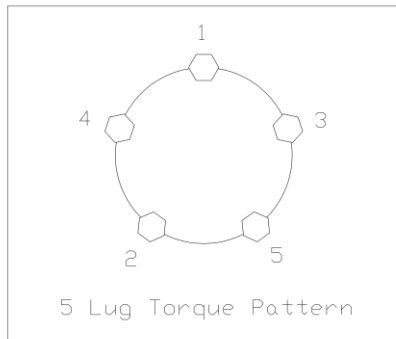
**THIS VEHICLE CONFORMS TO ALL APPLICABLE US FEDERAL MOTOR VEHICLE SAFETY STANDARDS IN EFFECT ON THE DATE OF MANUFACTURE SHOWN ABOVE.**

**VIN:** 4S9XXXXXXXXX464XXX      **TYPE: TRAILER**      **MODEL:** 72W BIVY      **FD-304 REV A**

Example VIN label with weights and capacities.

OTHER SPECIFICATIONS

|                          |           |
|--------------------------|-----------|
| Overall Length           | 16' 5"    |
| Body Length              | 11' 10"   |
| Total Height             | 8' 2 1/2" |
| Body Height              | 6' 8"     |
| Body Width               | 6' 7"     |
| Overall Width            | 8' 3"     |
| Ground Clearance at Axle | 12"       |
| Weight empty             | 1590 lbs. |
| Battery Type             | 12V       |



5 Lug Torqueing Sequence

TORQUE TABLE

|                  |              |
|------------------|--------------|
| Wheel Lugs       | 90-120 lbs.  |
| Axle U Bolts     | 30-50 lbs.   |
| Body Nut Inserts | 145 in. lbs. |



## SECTION 2. COUPLING YOUR TOW VEHICLE AND RV



**CAUTION:** If your tow vehicle was not equipped with a trailer hitch, we suggest you have one installed by an automotive repair specialist. Many popular automotive models have receiver hitch mounting kits available that will aid in installation.

Our towed vehicles utilize a standard 2" ball unless equipped otherwise. In those instances, information will be included in your owner's pamphlet for special instructions.

When loading your trailer, NEVER exceed the weight limits of your RV OR your tow vehicle. The weight which you are permitted to carry in your RV is determined by the lowest weight allowable on either your tow vehicle or your RV. Information on your tow vehicle's limits can be found in your tow vehicle's owner's manual and on certain placards on your vehicle. Information on your RV's limits can be found in this manual and on the RV Vehicle Identification Number tag on the left front side of your RV.

In general, one should have approximately 1/10<sup>th</sup> of the total loaded trailer weight on the hitch. The heaviest loads should be loaded as low as possible, directly over the axle.

With all your gear loaded and the proper weight distributed at the hitch, select a ball mount that levels the trailer frame from front to rear. This should give you the best towing properties.



Hitch Latch Opened



Hitch Latch Closed And Locked.

Always be sure to latch the trailer tongue hitch. It is best to get into the habit of locking the hitch latch. Your trailer has a light tongue weight. It would be easy for someone to walk away with your trailer for personal gain or as a personal joke! Locking it may keep it from walking away.



Hitch Coupler Secured on Ball.



Correct Safety Chain Installation.

Safety chains that are SAE compliant to your trailer's gross trailer weight are included on your trailer. The proper method for installation is to cross the left trailer tongue chain and attach it to the right slot on the tow vehicle hitch. Attach the right trailer tongue chain to the left slot on the tow vehicle hitch. Be sure to leave enough slack in the chains that they will not bind during tight cornering or crossing dips or bumps. Do not allow the safety chains to drag on the ground.

Check for information about products mentioned in this section on the web or from a professional before purchasing and read and follow the instructions supplied by the manufacturer before use.



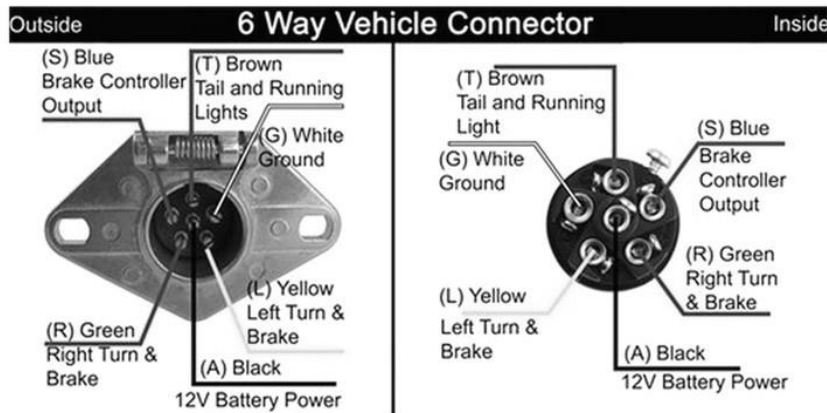
## SECTION 3. WIRING YOUR TOW VEHICLE TO YOUR RV



**CAUTION:** Wiring your tow vehicle to your RV must be done by an automotive wiring professional. We at SMC assume no liability to any damage to our product or the tow vehicle if the vehicle wiring is not installed properly. Neither do we assume any liability to damage to our product or the tow vehicle if the RV wiring has been altered from original.

Our products come standard with a six way round pin electrical connector. Your RV vehicle pigtail is wired consistent to industry standards pin placement as illustrated below. Due to availability of wire color combinations, the wire colors may vary; however, the plugs pin functions will not vary. There are many aftermarket products being offered to adapt this standard connector to other standard connectors if your vehicle is already wired.

If your vehicle is not wired, we suggest you have this job professionally done. There are some popular automotive models that have “plug and play” wiring kits available that will aid in installation.



Typical Six Pole Round Pin Wiring

You can find information about your vehicle’s wiring and products made for easy installation on the web or from a professional. Please read and follow the instructions supplied by the manufacturer for use.

## SECTION 4. TOWING YOUR RV



**CAUTION:** Be absolutely sure of your RV's weight capacities and the towing capacity of your vehicle. DO NOT EXCEED THESE LIMITS!

Before you pull out, and every time you use your trailer, you should inspect it using the following check list.

- Check and tighten the wheel lug nuts if necessary.
- Check and tighten the axle u-bolts if necessary.
- Check for correct tire pressure or excessive tire wear.
- Securely latch the coupler hitch.
- Make sure that the safety chains are secured.
- Check that the front jack is fully retracted.
- Connect the electrical cord and check all lights.
- Make sure the outer living structure is properly secured.
- Be sure all cargo is adequately secured.
- Check that all doors, windows and vents are fully closed.
- Check for objects on, under, or leaning against the unit.
- Make sure your auto's mirrors are adjusted.

Towing your RV should be a combination of not feeling like you are towing anything, while still being constantly aware that you ARE towing something. In some cases your vehicle is now twice as long as it was! Acceleration, cornering, backing up, and braking are all going to be affected.

Take a little time to get the feel of towing your new vehicle before you head off on that long trip. If you are unfamiliar with towing a trailer, practice maneuvering in a remote area free from obstructions, and onlookers. Try the acceleration and braking, take some light curves and a slow speed wobble.

Slowly stop in the tightest turning radius of your vehicle. Note your trailers location and the angle of the trailer compared to the tow vehicle. Also note where the trailer fenders are located. This is now the turning radius with your trailer. You MUST make sure you leave at least this amount of room on any inside corner or you could damage your trailer. This is also the point where, when backing a trailer, the trailer begins to "jackknife", meaning you cannot get the trailer to come back straight. Do this in both directions to familiarize yourself with your towing combination.

When you are sure no one is watching, you can attempt backing up. Really, a spotter is helpful. Don't be intimidated. Some people pick it up right away, others may take some practice. It is simply turning opposite of the way one would normally turn without a trailer. Some people suggest that to back up with a trailer you can use the same turning motions with your

hand on the bottom of the steering wheel rather than the top. However you decide is best for you, take your turns lighter than you would without a trailer, and be aware when you find yourself about to jackknife. To right yourself from this condition, all you must do is pull straight forward until you have enough room to correct the problem.

Next, take a short trip where you can slowly get your combination up to highway speed. Check for wobbles, bouncing, or swaying. If you feel any undesirable effects, check with your auto repair specialist or in our troubleshooting section.

The difference between a leisurely trip and days of white knuckle driving could be as simple as a different drop in your ball mount. The time to find that out is prior to your vacation departure. If you have any questions regarding the performance of your tow vehicle and this Snowy Mountain product, please contact us directly and we will do our best to advise you.



**CAUTION:** DO NOT TOW ANYTHING BEHIND YOUR TRAILER. If your trailer is equipped with a receiver mount, it is for 100 pounds of cargo only.



## SECTION 5. LOADING YOUR RV



CAUTION: Always check your tires when loading your RV.



CAUTION: Always block the rear of your RV or maintain tongue weight as you load the rear of the trailer.

When loading your trailer, NEVER exceed the weight limits of your RV or your tow vehicle. The weight distribution of your RV will be determined by the weight limits of your tow vehicle and RV. Information on your tow vehicle's limits can be found in your tow vehicle's owners manual and on certain placards on your vehicle. Information on your RV's limits can be found in this manual and on the RV Vehicle Identification Number tag on the left front side of your RV.

Always check the tire pressure and check for tire wear before loading.

In general, one should have approximately 1/10<sup>th</sup> of the total loaded trailer weight on the hitch (100 pound tongue weight per every 1000 pounds total trailer weight). NEVER EXCEED THE WEIGHT LIMITS OF YOUR TOW VEHICLE OR HITCH.

The heaviest loads should be loaded as low as possible, directly over the axle. Always maintain even weight distribution from side to side. SECURE YOUR LOAD to keep it from shifting, possibly damaging your trailer or its contents.

Everything you attach to the outer structure will add weight and will result in a heavier lift to get from the closed position to opened and back. We do not suggest a roof rack or cargo carrier of any sort be placed on this structure.

DO NOT CARRY CARGO OR ATTACH A CARGO RACK DIRECTLY ON THE ROOF.

DO NOT OPEN OR CLOSE THE OUTER STRUCTURE WITH CARGO ATTACHED.

## SECTION 6. YOUR RV'S FEATURES AND OPTIONS

### 12 Volt Wiring System



CAUTION: Do not tamper with your unit's wiring.

Your vehicle may come with any of the following optional equipment acquired from a third-party manufacturer. If there was an owner's manual or warranty included with that product, this information can be found in the packet which contained this manual. You're Snowy Mountain Campers warranty does not cover components manufactured by a third party, so please familiarize yourself with those products by reading and following the instructions provided by that manufacturer. Also, fill out any registration cards provided for each component, and return them to their respective manufacturer.

A word on "ghost loads". Ghost loads is a term used for energy being drawn from your battery that you are not aware of. Many electric devices constantly draw loads for lighting or memory, and as a result will drain a battery when it seems nothing is on. We strive to use only products that do not have these features; however, they have become almost unavoidable.

We urge you to disconnect the battery, or to use a battery maintainer, while your vehicle is stored to prolong the life of your battery.

12 VOLT POWER PORT: Your vehicle is equipped with two 12 volt charging ports and two 12 USB ports. This is a heavy duty 15 amp capacity unit with two 12 volt cigarette lighter ports. These can be used with many standard 12 volt accessories such as lighting and small 110 volt power inverters. DO NOT USE THIS POWER SUPPLY FOR A CIGARETTE LIGHTER. This unit also includes a power monitor which displays battery voltage at all times and will drain your battery. Manufacturer's instructions are included in your owner's packet. This item has been altered by us, for use in your RV. Our 1 year warranty will cover replacement if it is faulty.

12 VOLT POWER VENT FAN: Wiring has been run in your roof for a 12 volt powered vent fan if you decide to add that option in the future.

12 VOLT BATTERY: You bought a big-ass Optima marine battery for your RV, but I forgot to get the specs. They are a no-mess, trouble-free battery that will supply sufficient power for your basic needs. You will find a 15 amp fuse for over-current protection and a 15 amp reversed polarity fuse inside the power supply center box. You can pull the master fuse when your vehicle is stored to keep from draining your battery.

## 115 Volt Power System



**CAUTION:** Do not tamper with your unit's wiring.

Your vehicle may come with any of the following optional equipment acquired from a third party manufacturer. If there was an owner's manual or warranty included with that product, this information can be found in the packet which contained this manual. You're Snowy Mountain Campers warranty does not cover components manufactured by a third party, so please familiarize yourself with those products by reading and following the instructions provided by that manufacturer. Also, fill out any registration cards provided for each component, and return them to their respective manufacturer.

Your trailer has been set up with a 115v 15 amp power supply center. Power is introduced from outside through a side mounted receptacle and any 15amp power cord. The power center is located under the bed and is accessed through the left, under-bed cabinet door. There is a 15 amp main breaker and two 15 amp service breakers. One service breaker feeds the two AC power receptacles, the other feeds the battery charger in the power center.

One of the two AC power receptacles is located inside the trailer on the lower side of the refrigerator cabinet. This receptacle is a GFCI and feeds the other, which is located behind the refrigerator and is accessed from the refrigerator access door.

Instructions for this equipment is located in the owner's packet delivered with you unit.

## Propane System



**CAUTION:** Do not tamper with the propane system or plumbing. LP gas is extremely dangerous. Improper use can cause serious injury or death, damage to your property and the property of others. Read and follow all information supplied in this manual and all component part manufacturer's manuals supplied with your unit.

A propane system has been added to your unit to provide a means for cooking, heating, and remote refrigeration. This system will offer years of trouble-free service with minimal care. It has been pressure tested and all the appliances were operated. Please read and follow the product manuals provided by the component manufacturers. Do not operate any component inconsistent with the manufacturer's guidelines.





**CAUTION:** Never use your cooking appliance as a heat source.

Cooking appliances consume large amounts of oxygen and need fresh air for safe operation. Before operating, open an overhead vent and a window. Never use cooking appliances for extended periods of time. Propane gas is odorless, so suppliers add a smell of rotten eggs so you can determine if you have a gas leak.



**DANGER:** If you smell gas;

1. Extinguish all open flames, pilot lights, and smoking materials.
2. Do not touch electrical switches.
3. Shut off the gas supply at the tank valve.
4. Open the door, windows, and other vent openings.
5. Leave the area until the odor clears.
6. Have the gas system checked and any problems corrected by a professional before further use.

FAILURE TO COMPLY COULD RESULT IN AN EXPLOSION RESULTING IN SERIOUS INJURY OR DEATH AND PROPERTY DAMAGE.



**DANGER:** All pilot lights, appliances, and their igniters must be shut off before refilling motor fuel tanks and/or LP gas containers.

FAILURE TO COMPLY COULD RESULT IN AN EXPLOSION RESULTING IN SERIOUS INJURY OR DEATH AND PROPERTY DAMAGE.

To refill your LP gas cylinder;

1. Extinguish all open flames, pilot lights, and smoking materials.
2. Make sure your cylinder is off by turning the tank valve clockwise until firmly closed.
3. Unscrew the regulator and hose by turning the Acme tank connector counter-clockwise until removed.
4. Remove the ¼" wing nut from the ¼" thumb screw located at the bottom of the tank where it mounts to the carrier. Lift the rear of the tank and slide the tank back and away from its mount.
5. Install the tank in reverse sequence and tighten the carrier bolt as tight as possible.
6. Connect the regulator and hose to the cylinder, hand tighten.
7. Open the cylinder valve slowly, listen for a hissing sound that lasts longer than a second. If this sound persists, you have an appliance valve on or a gas leak. SHUT THE GAS OFF and check for leaks or open valves. A leak detection solution can be used to check for leaks.

CONSULT AN LP GAS PROFESSIONAL FOR REPAIRS OR SERVICE TO THIS SYSTEM.



CAUTION: LP gas cylinders shall not be transported or stored in your vehicle or camping unit.

Propane gas tanks should be securely stored in a well ventilated area free from combustion sources.

Your RV is equipped with a CO2 Monitor and a LP Gas Leak Detection Device. Please read the manuals provided by the manufacturer and follow their recommended guidelines for testing and maintenance.

### Water System



CAUTION: Do not tamper with the water system or plumbing.

Your water system has been designed and built for ease of use and maintenance. The system is comprised of a water inlet, a 10 gallon storage tank, an exterior petcock and drain, and a hand pump. With the trailer leveled, the system has been designed to drain from the external drain, and no other winterization is needed. We suggest rinsing the system several times prior to first use, and at least once each year before seasonal use. RV antifreeze or a light chlorine solution can be introduced during storage and will help keep algae from forming. If chemicals are used during storage, read and follow the products label. We recommend a three rinse policy before use if any chemical has been used during storage or if the unit has been sitting for an extended time.

The sink drain is directed out through a grey water drain which should be connected to a hose and collected in a bucket or a grey water tote tank.

## **SECTION 7. MAINTAINING AND STORING YOUR RV**

### **Condensation**

Condensation is natural and can occur whenever the humidity is high. Breathing, cooking, or burning certain fuels can add to high levels of humidity that will condense on the windows and framing. This condensation should be kept at a minimum with proper ventilation or a small dehumidifier available from many RV or marine dealers.

### **Interior Cleaning and Care**

Heat and rot are the two biggest concerns for the interior and paneling. Checking the interior on a regular basis is a must. Try to keep ventilated when extremely warm. Make sure you keep moisture out.

Installing curtains is something you may want to do or have us install for you. This will help keep the interior cool and offer some relief from fading.

The paneling in your RV has been adequately sealed with a polyurethane finish and can be cleaned with water and mild detergent. A soft pencil eraser or "magic eraser" will often remove discoloring associated with a light scratch.

Do not alter the interior without consulting us or our representatives or you may void the manufacturer's warranty.

Try to stay away from harsh chemicals and solvents if possible. Be cautious of corrosive, polishing, or buffing agents. If you must use any questionable substance for cleaning, try it in an inconspicuous place first.

### **Aluminum Care and Cleaning**

Many dust suppressants, salts, and de-icing solutions are corrosive to aluminum. Also, aluminum will naturally tarnish over time. We suggest that you routinely wash the exterior and always wash your RV immediately after your trip. It is good environmental practice to wash your RV and all of your off-road equipment after being off-road to keep noxious weeds from spreading.

Use a chamois immediately after washing to eliminate hard water deposits and water spots. Use light pressure, and be sure to rinse your chamois often to keep it free of debris. If dirt becomes imbedded in your cloth, it can leave light scratches in your aluminum. Shark Hide is a product used to protect aluminum boats and seems to work well on our exoskeletons and panels.

Try to stay away from harsh chemicals and solvents if possible. Be cautious of corrosive, polishing or buffing agents. If you must use any questionable substance for cleaning, try it in an inconspicuous place first.

### **Storing Your RV**

A soft RV cover or custom boat cover works well to protect your investment. Some universal car covers will work, be sure to check the size before ordering.

“Ghost load” is a term used for energy being drawn from your battery that you are not aware of. Many electric devices constantly draw loads for lighting or memory, and as a result will drain a battery when it seems nothing is on. We strive to use only products that do not have these features; however, they have become almost unavoidable. We urge you to disconnect the battery, or to use a battery maintainer, while stored to prolong the life of your battery. You should have your battery checked annually and replace when worn.

You should try to protect your tires from UV rays while stored. Tire covers will help with this. If you are somehow able to wear out a set of tires on your RV before the sidewalls check, you are one probably one happy camper!

### **Chassis**

A chassis inspection should be performed by a qualified automotive or RV professional annually prior to being readied for travel. The coupler, safety chains and attaching components, axle and spring hardware, and axle wheel bearings should all be examined or serviced. The tires should be checked for wear and proper inflation. The body mounting bolts should be checked and tightened as necessary.

Check for information about any of these products on the web or from a professional before purchasing, and read and follow the instructions supplied by the manufacturer before use.

## **SECTION 10. TROUBLESHOOTING**

### **Handling**

If you find that the combination of tow vehicle and trailer doesn't handle or track well, check some of these things;

Check for proper tire inflation on the trailer and tow vehicle. Tire pressures for the trailer can be found in Section 1 of this manual or on the VIN tag on the right hand side of your RV.

Make sure that your trailer frame sits level from front to rear when coupled, as explained in Section 2. You may try to lower or raise the height of the hitch ball.

Refer to Section 5 for loading techniques. You may try adjusting your load forward or back slightly.

If you have any questions regarding the handling of your Snowy Mountain Campers product, please contact us directly and we will do our best to advise you.

### **Appliances**

If you are having problems with any of the hardware or appliances please check for instructions from the manufacturer that are located in the Owner's Packet, provided with your unit. In many cases, we will not have duplicate resources on file. Do not hesitate to contact us if you need our help.

Be mindful of the terrain you are traveling but take your traveling home  
where you want to go!

Let others share the same enjoyment - Take only Memories,  
Leave only Footprints.

